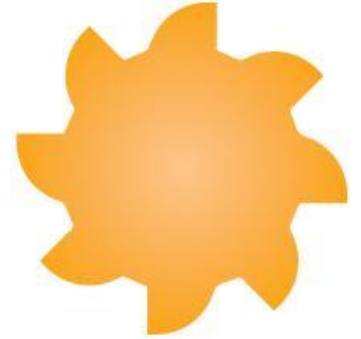


Holly Cross - Director
01239 831602
holly@cwmarian.org.uk

CARE
cwm arian **renewable energy**



Who & What is CARE?



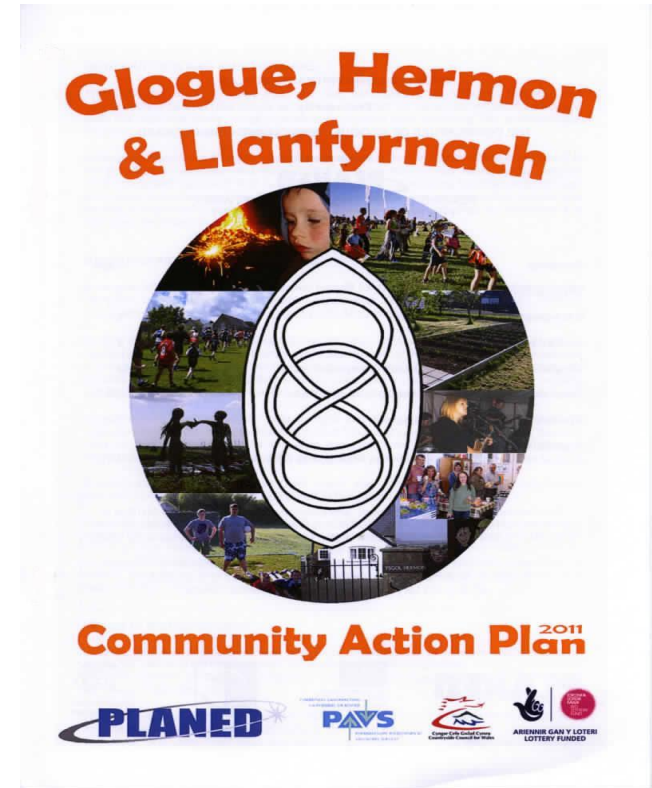
- Community benefit society
- Limited company
- Employer

- Volunteer directors
- Local residents & lay-people

Origins – Action Planning



- Community action planning:
 - Tackling climate change
 - Protection from fuel poverty
 - Exploring renewables





**How do community energy projects
add value to the energy sector?**



Enterprise:

safeguard local peoples' businesses and jobs, and support new business development

Community development & facilities:

keep local communities alive by creating opportunities for young people and supporting the strong Welsh language culture of the area, and by improving community facilities

Household improvements:

help local people make their homes more energy efficient and combat the problem of fuel poverty



October 2019

July 2019 (and for several hundred years before that...)





Thanks...



Welsh Government Energy Service; Energy Savings Trust; Planning Inspectorate; Assembly Ministers; County Councillors; Seren Energy; Development Bank for Wales; Community Energy Wales; Renew Wales; Awel Aman Tawe; Transition Bro Gwaun; all the other community energy pioneers, Bill, Eirlys, Cris, Dan, Rhys, Chris, Marc, Mike, Aidan, Jess, parents, partners, siblings, lovers, friends, teachers, children, neighbours, ...



NEWS

[Home](#) [UK](#) [World](#) [Business](#) [Politics](#) [Tech](#) [Science](#) [Health](#) [Family & Education](#)[Wales](#) [Wales Politics](#) [Wales Business](#) [North West](#) [North East](#) [Mid](#) [South West](#)

'Climate emergency' declared by Welsh Government

🕒 29 April 2019 📄



🔗 Share

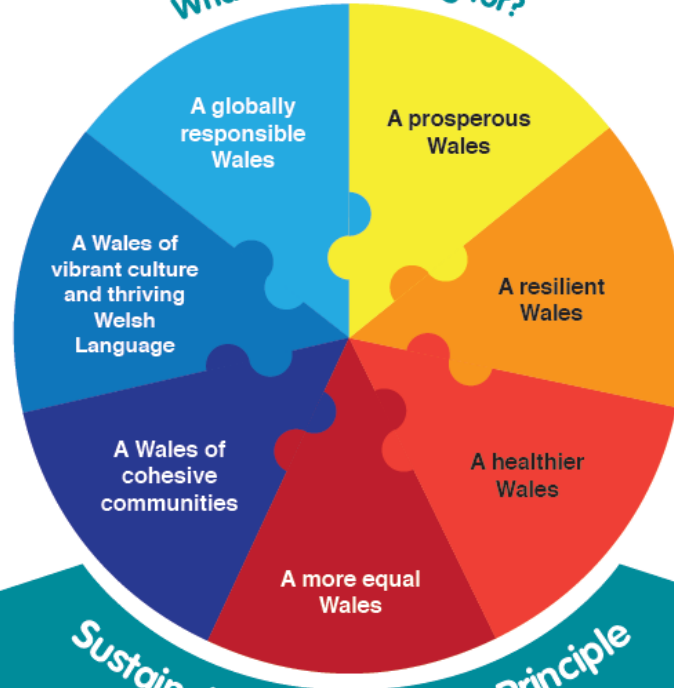


ANDREW MABEY

Protests in Cardiff last week saw cyclists ride slowly through the city, disrupting traffic



Well-being Goals What we are aiming for?



Sustainable Development Principle How we will deliver



Long Term



Prevention



Integration



Collaboration



Involvement



45 GW

200,000 kWh

168 MW

8 MW

1 GW

Community Energy

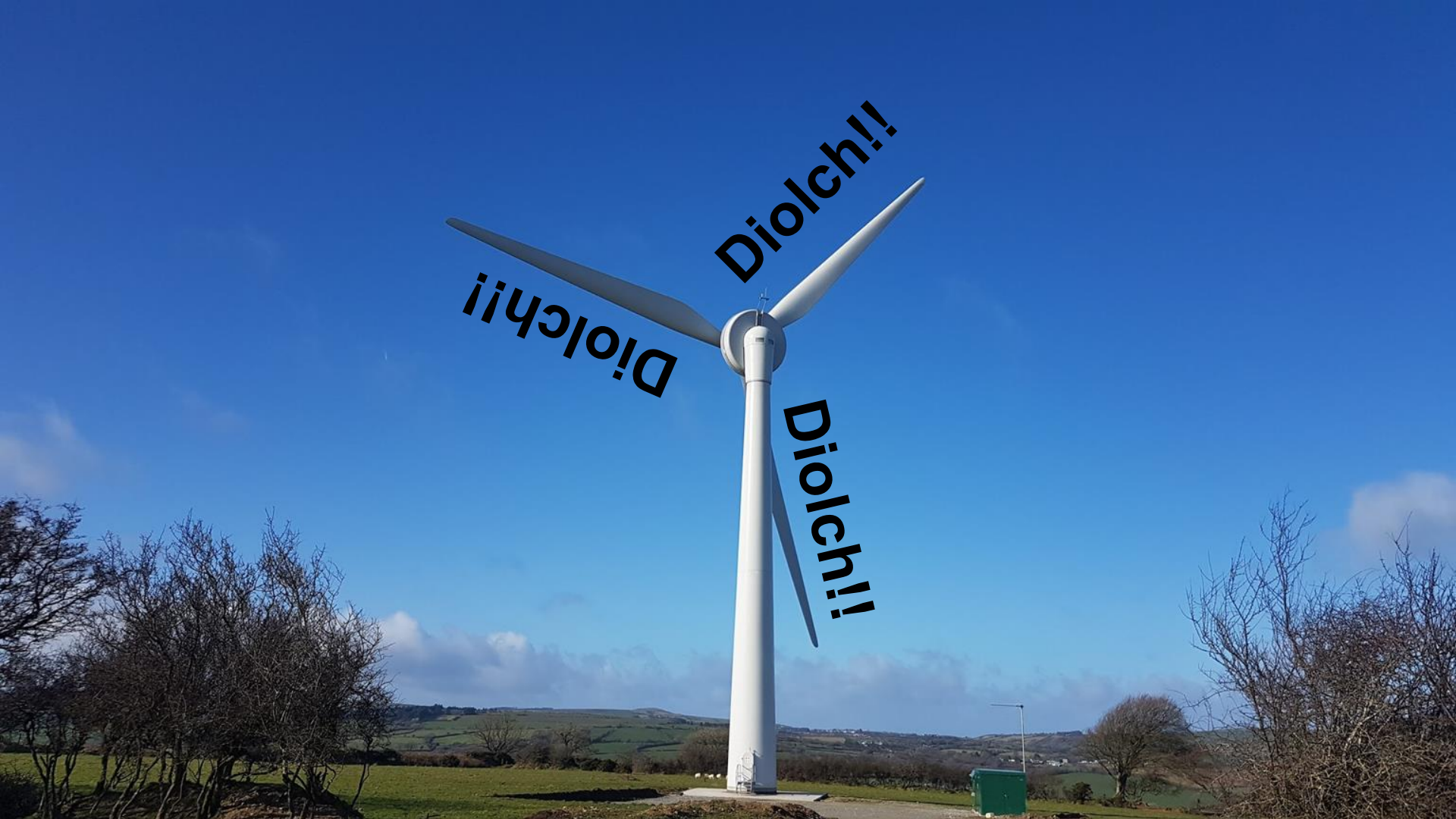
Community energy refers to the delivery of community led renewable energy, energy demand reduction and energy supply projects, whether wholly owned and/or controlled by communities or through partnership with commercial or public sector partners.

Community energy groups are important stakeholders to us at Western Power Distribution. We are committed to working proactively with ours.

Making community wind work in Wales?



- Lack of support from local planning authority
- Lack of joined up thinking in parliamentary & WG policy
- Removal of tax relief for investors
- Reduction in FITs
- Huge amounts of bureaucracy at every turn
- Empty words from Western Power Distribution
- Not acting like we're in a climate emergency



Diolch!!

Diolch!!

Diolch!!