



**nationalgrid**

# **Community energy forum: Birmingham**

08/11/24

# About Regen

Regen provides independent, evidence-led insight and advice in support of our mission to transform the UK's energy system for a net zero future.

We focus on analysing the systemic challenges of decarbonising power, heat and transport.

We know that a transformation of this scale will require engaging the whole of society in a just transition.



Experts



Pioneers



Convenors

# Regen supporting community energy

We've supported and developed networks of community energy organisations across the UK for over 10 years, working on policy, innovation and direct support.

- We **champion the community and local energy sector** at a policy level and create consultation briefing notes to help others do the same.
- We organise online and in-person **forums** for community energy groups to help build knowledge, capacity and engagement with the wider energy sector.
- We take part in **innovation projects** and investigate emerging opportunities.
- We help write **community energy strategies** for Distribution Network Operators and local authorities to ensure the support they offer communities is targeted and co-designed.
- We write **plain English guides** to the energy system, to help communities learn about local supply, innovation, heat, hydrogen, storage, connecting to the network and more.

# Agenda

13.00

**Welcome from the chair and National Grid Electricity Distribution (NGED)**

Robbie Evans, *energy analyst*, Regen

Sarah Jeffery, *head of strategic customer engagement*, NGED

13.10

**Learning from our communities: finding solutions to fuel poverty together in Bristol**

Rachel Moffat, *coordinator*, Bristol Energy Network

13.25

**Workshops**

**1. Writing a funding application**

Ruth Mulvaney, *principle rural energy projects officer*, Midlands Net Zero Hub

**2. Effective community engagement**

Robbie Evans, *energy analyst*, Regen

**3. Creating innovative projects to generate social value**

Kate Copeland-Rhodes, *partnership manager*, Staffordshire Community Energy

# Agenda

- |              |   |
|--------------|---|
| <b>14.15</b> | <b>Tea break and networking</b>   |
| <b>14.50</b> | <b>Breakout groups discussing how GB Energy can support community energy</b><br>1.Starting out in the sector<br>2.Established in the sector |
| <b>15:55</b> | <b>Feedback</b>   |
| <b>16:00</b> | <b>Close</b>  |

## **Wifi password**

Connection: UVB

Password: Un1qu3VB



**Electricity  
Distribution**

# **Welcome from National Grid**

**Sarah Jeffery  
Head of Strategic Customer Engagement**

**nationalgrid**

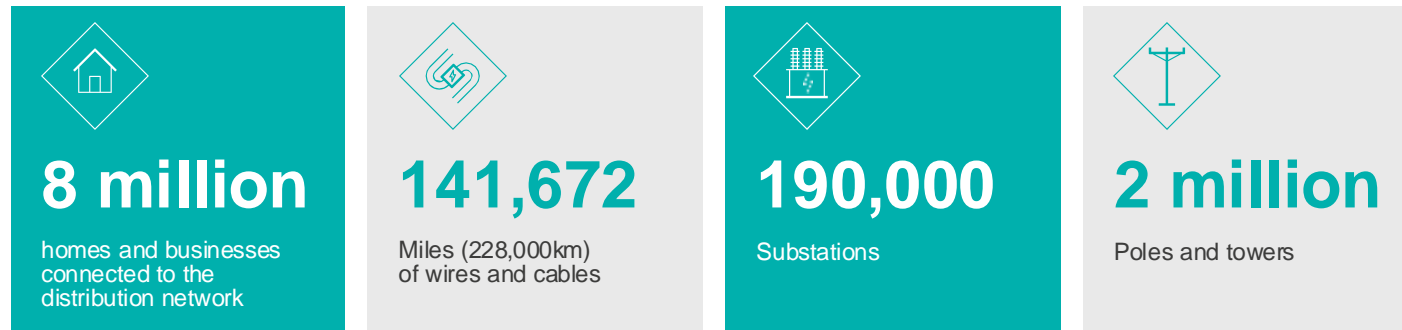


# Who we are and what we do

National Grid Electricity Distribution (NGED) is a Distribution Network Operator (DNO) and a Distribution System Operator (DSO), responsible for distributing electricity to eight million customers.

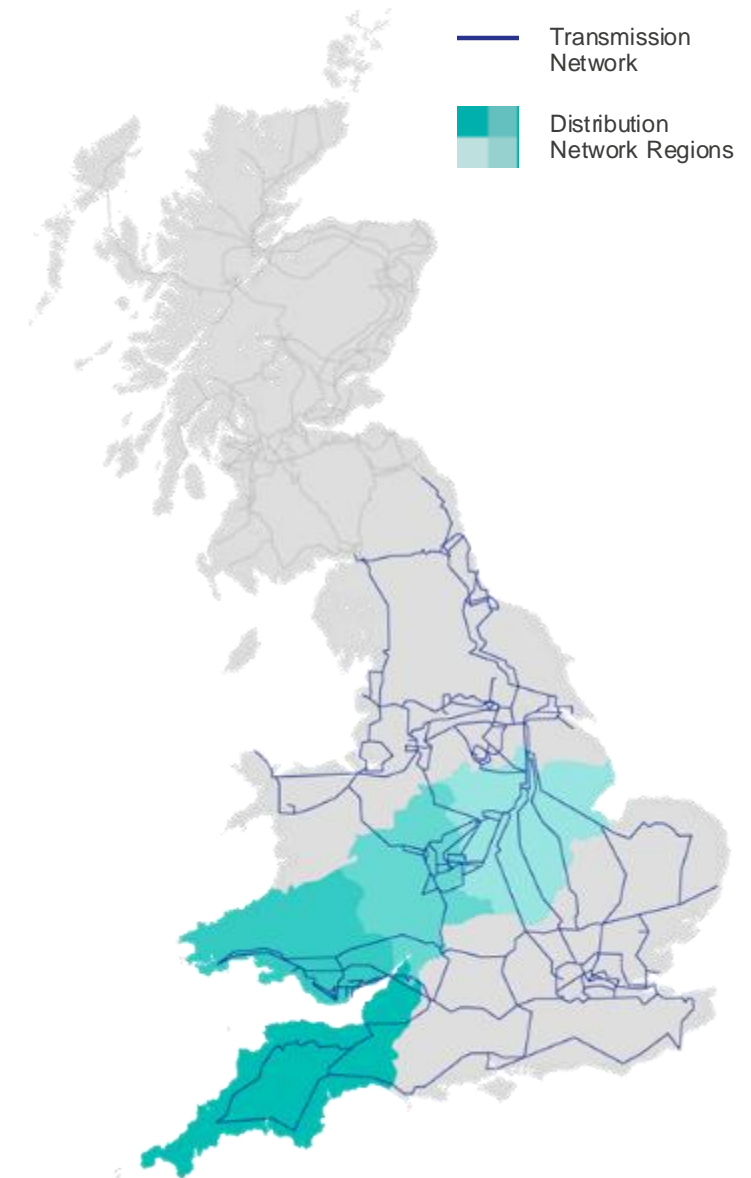
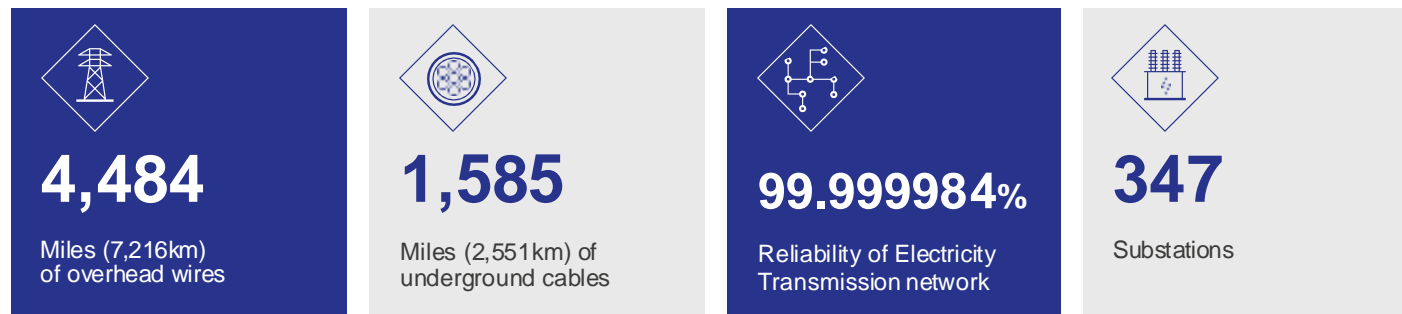
## Electricity Distribution

Own and operate the electricity distribution networks for the Midlands, the South West and South Wales.



## Electricity Transmission

Own and operate the high-voltage electricity transmission network in England and Wales.





# How we support community energy



nationalgrid

# **LEARNING FROM OUR COMMUNITIES:**

**FINDING SOLUTIONS TO TACKLE FUEL  
POVERTY TOGETHER IN BRISTOL**

**Rachel Moffat, Bristol Energy Network  
National Grid: Net Zero Communities Forum**



# WHO WE ARE

- Member-led community energy network
- Diverse membership
- Connect, inspire, and engage on energy: awareness and support, community-led retrofit, ownership & generation
- Focus on communities not engaging with energy



# WHAT WE DO

ENERGY HELP DESK



GREEN OPEN HOMES



DIY RETROFIT WORKSHOPS



COMMUNITY WIND PROGRAMME



# ADDRESSING BARRIERS: OUR ENERGY HELP DESK

We leverage our engaged network of community groups to identify areas that need addressing

- We offer a package of advice and support tailored to each community including:
- Offering first-hand advice to residents
- Providing pathways to further financial and advisory support
- Helping understanding of energy usage & behaviour
- Training and accessible skills to help residents take action



# ADDRESSING BARRIERS: OUR ENERGY HELP DESK

“I've just managed to reduce a family's bill from £267 to £150 for gas and electric by quoting duty of care and that clause you mentioned!!”

School family support worker winter 2022

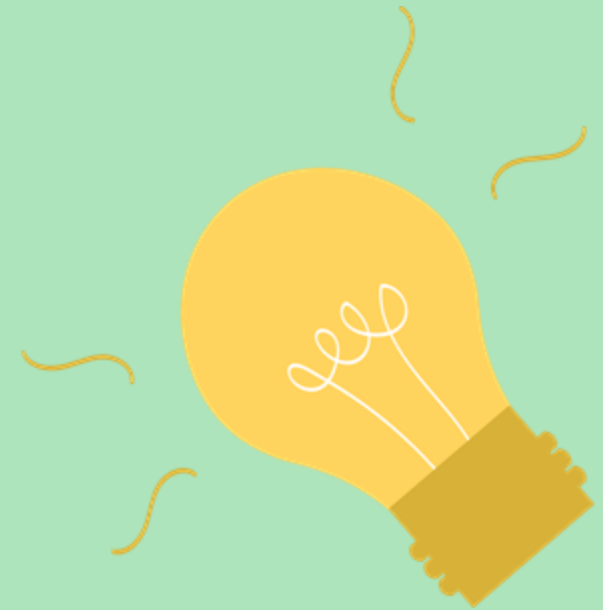
38 Energy Help Desks in 2024  
Contact with over **750** individuals



# **ADDRESSING BARRIERS: OUR ENERGY CHAMPION PROGRAMME**

The Energy Champion programme offers:

- **Access to a free home energy assessment, carried out by our partners Energy Tracers CIC**
- **A workshop, developed in conjunction with Energy Tracers to provide DIY skills & understanding of energy**
- **Connecting Energy Champions to local community hubs**
- **A regular newsletter with updates, advice, and support around energy**





# ADDRESSING BARRIERS: OUR ENERGY CHAMPION PROGRAMME



# HOW YOU CAN REDUCE FUEL POVERTY IN YOUR COMMUNITY ENERGY WORK



# JUST TRANSITION DECLARATION



# ▶ Workshops

► Break

# GB Energy: the commitments so far

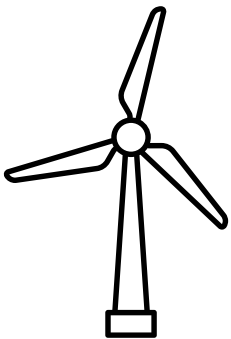
# Background



**Headquartered in Aberdeen**



**Backed by £8.3 billion of new money**



**Intended to ensure UK taxpayers, bill payers and communities reap the benefits of clean energy**

# Main commitments

- **Project investment and ownership** - investing in projects alongside private sector
- **Project development** - leading projects through development stages
- **Local Power Plan** – support local energy generation projects
- **Supply chains** – building supply chains across the UK
- **Great British Nuclear** – considering how GB Energy and GB Nuclear will work together



# The Local Power Plan

*“...the Local Power Plan will roll out small and medium-scale renewable energy projects, using established technologies, to develop up to 8 GW of cheaper, cleaner power. This will include shared ownership projects in partnership with private developers. This will support a more decentralised and resilient energy system, with more local generation and ownership.”*

- Gb Energy founding statement

# How can GB Energy support the development of the community energy sector?





📍 : Bradninch Court, Castle Street, Exeter, EX4 3PL