

# Regen greenhouse gas assessment 2020

June 2021



---

This report was produced for Regen – public reporting of  
greenhouse gas emissions

---

Issue date June 2021

---

Version 1.0

---

Written by: Mark Howard

---

Approved by: Merlin Hyman

---

Regen, Bradninch Court. Exeter, EX4 3PL  
T +44 (0)1392 494399 E admin@regen.co.uk www.regen.co.uk  
Registered in England No: 04554636

---

All rights reserved. No part of this document may be  
reproduced or published in any way (including online) without  
the prior permission of Regen

---

# Regen greenhouse gas assessment 2020

## Summary

This annual report on company emissions has been produced as part of Regen’s net zero commitment under the UNFCCC ‘Race to Zero’ campaign. More information about this can be found [here](#).

The assessment for 2020 shows a significant change in gross emissions, reducing to 54% of the 2019 baseline. This reduction is largely due to reduced staff commute and delegate travel to events, emissions would be expected to rebound to a certain extent in 2021 and future years.

<b>Change in gross emissions</b>			
<b>Emissions</b>	<b>2019</b>	<b>2020</b>	<b>2020 relative to 2019</b>
Scope 1	4,608	4,538	98%
Scope 2	3,324	2,134	64%
Scope 3	94,017	48,713	52%
<b>Total gross emissions (kgCO2e)</b>	<b>101,949</b>	<b>55,385</b>	<b>54%</b>

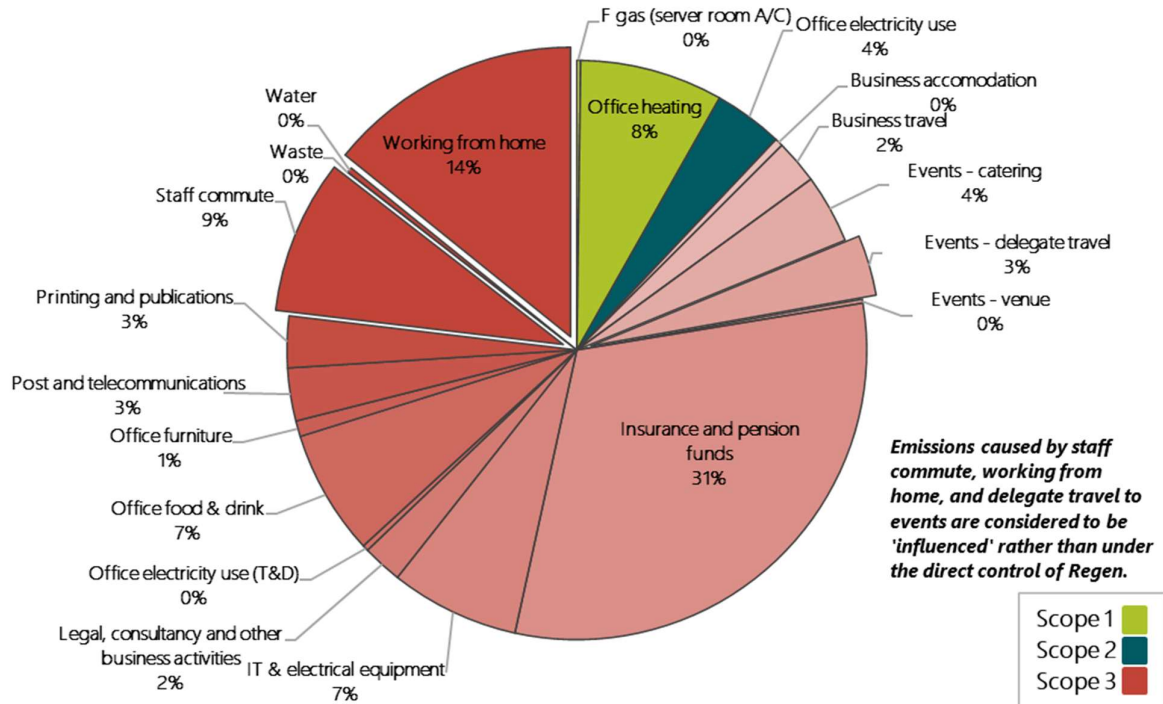
## 2020 reporting

Estimated emissions for the 2020 calendar year are shown in the table below. These have been calculated in line with the current HM Government ‘Environmental reporting guidelines’. We have also used the GHG Reporting Protocol – Corporate Standard and the 2020 UK government’s Conversion Factors for Company Reporting.

<b>Regen greenhouse gas emissions reporting for the 2020 calendar year.</b>	
<b>Emissions</b>	
Scope 1	<b>4,538</b>
Scope 2	<b>2,134</b>
Scope 3	<b>48,713</b>
<b>Total gross emissions (kgCO2e)</b>	<b>55,385</b>
<b>Removals</b>	
Green electricity tariff	<b>0</b>
Carbon offsets	<b>0</b>
<b>Total removals (kgCO2e)</b>	<b>0</b>
<b>Total net emissions (kgCO2e)</b>	<b>55,385</b>
<b>Net emissions intensity (kgCO2e/£ turnover)</b>	<b>0.04</b>
<b>Emissions intensity benchmark for membership organisations (kgCO2e/£ turnover)</b>	<b>0.15</b>

The full breakdown by category is shown in the pie chart, an additional category estimating working from home emissions has been added for 2020.

regen **Regen 'influence' greenhouse gas emissions 2020 - 55,385 kgCO<sub>2</sub>e**



The following table provides a summary of the assessment method, providing transparency about the accuracy of the data.

Source of emissions	Scope	Means of assessment	Specific exclusions	% of activity data that is estimated
F gas (server room A/C)	1	Estimate	None	100%
Office heating	1	Estimate - pro rata for m <sup>2</sup> of building	None	100%
Office electricity use	2	Data & estimate	None	30%
Business accommodation	3	Scope 3 screening method	None	100%
Business travel	3	Data - expenses	None	None
Events - catering	3	Scope 3 screening method	None	100%
Events - delegate travel	3	Estimate	None	100%
Events - venue	3	Estimate	None	100%
Insurance and pension funds	3	Scope 3 screening method	None	100%
IT & electrical equipment	3	Scope 3 screening method	None	100%
Legal, consultancy and other business activities	3	Scope 3 screening method	None	100%
Office electricity use (T&D)	3	Data & estimate	None	30%
Office food & drink	3	Scope 3 screening method	None	100%
Office furniture	3	Scope 3 screening method	None	100%
Post and telecommunications	3	Scope 3 screening method	None	100%
Printing and publications	3	Scope 3 screening method	None	100%
Staff commute	3	Data - staff commute survey	None	None
Water	3	Estimate	None	100%
Waste	3	Estimate - pro rata for m <sup>2</sup> of building	None	100%
Working from home	3	Estimate	None	100%

## Changes relative to the previous year

Clearly 2020 was a very different business environment, gross emissions for 2020 are down to 54% of the 2019 baseline levels, largely due to a significant reduction in scope 3 travel associated with staff commuting and in-person events.

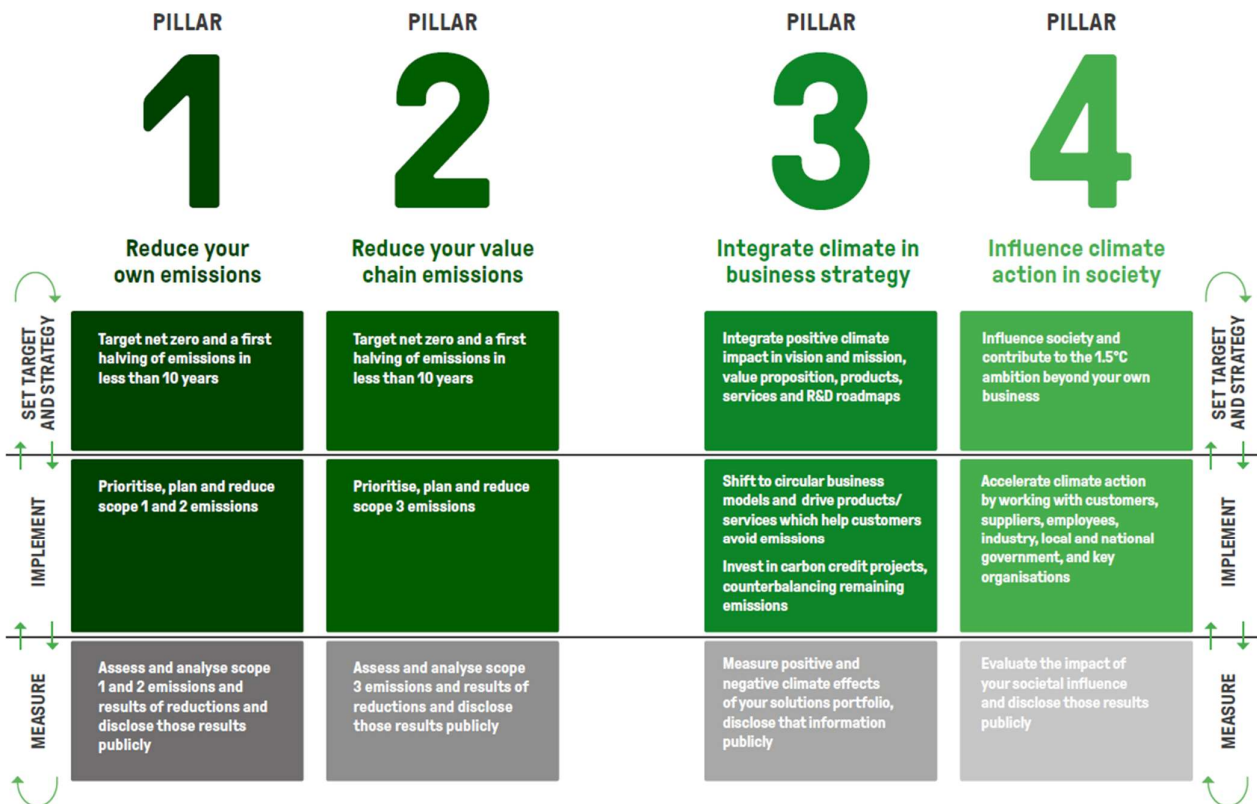
Change in gross emissions		
Emissions	2019	2020 relative to 2019
Scope 1	4,608	98%
Scope 2	3,324	64%
Scope 3	94,017	52%
<b>Total gross emissions (kgCO2e)</b>	101,949	54%

Electricity emissions (scope 2) were lower in 2020, due to a ~30% reduction in consumption caused by a lack of office occupation, combined with a reduction in the emissions intensity of the national grid.

## Updated strategic context for 2020

In March 2021 Regen joined the UNFCCC Race to Zero, via the SME Climate Hub, making a commitment to meet net zero by 2030. This has strengthened the focus of our internal work to address emissions, as well as provided a strategic framework to align with.

The SME framework is broken down into four pillars, as shown in the diagram.



Following this framework, the following action plans have been produced:

### Pillar 1 action plan

- Continue best practice energy use in office – lighting and computers off when not in use, possibly replacing server with cloud server, in winter minimising drafts (within Covid guidance) and correct use of radiator thermostats.

- Continue with existing best practice business travel policy – favouring low carbon and avoiding air travel where possible, investigate use of car club EVs as alternative to use of private ICE vehicles.
- Investigate longer term options for a lower carbon office.

#### **Pillar 2 action plan**

- Create resources to promote low carbon commute to staff (commute calculator tool, 'low carbon last leg' commuting map of Exeter), provide support for bike to work, rail travel season ticket loans, flexible work hours and location.
- Pursue EV charging in the office (sub-metering to account for potential increase in scope 2 emissions)
- Set up EV salary sacrifice scheme for staff commute.
- Run events online where beneficial.
- Encourage low carbon travel to in-person events and gather data on how delegates travel for improved understanding and awareness.
- Offer a revised events menu to offer meat-free catering at events, with possible exception for large functions where there is scope to procure low carbon/organic meat.
- Research to better understand impacts of pension funds, support staff to understand how their pension fund is invested and how they can control this.
- Continue to focus on low carbon business travel, use car club EVs, avoid travel where logical, with flights avoided where possible.
- Update procurement policy to encourage suppliers to join race to zero. Ideally, we will insist on this from 2025 where we are able.

#### **Pillar 3 action plan**

- This is clearly at the heart of our mission.
- Formed internal sustainability task force in 2019.
- Updated environmental policy with net zero commitment in 2020.
- Update procurement policy to encourage suppliers to join race to zero. Ideally, we will insist on this from 2025 where we are able.
- Continue to support 'true green' electricity tariff, investigate supporting staff to do the same to tackle working from home emissions.
- Identify suitable carbon credit projects to address current residual emissions.

#### **Pillar 4 action plan**

- Write blogs and newsletters for Regen members and wider community.
- Run and attend industry events.
- Work with our members to influence climate action in society.